

ant

LINE SHEET FW24/25

## THE MIDI DRESSES



**REF**  
VST2301B23B187

**NAME**  
Ruffled print dress

**COMPOSITION**  
100% Silk  
100% Polyester (Lining)

**DESCRIPTION**  
Ruffled front and back open-neck dress  
Balloon sleeve and fitted waist panel that then flares slightly in a skirt  
Exclusive print

**COLOR**  
187/90

**SIZES**  
34, 36, 38, 40, 42, 44

**WSP**  
162,96

**RRP**  
440,00



**REF**  
VST2307B23B187

**NAME**  
Lace details print silk midi dress

**COMPOSITION**  
100% Silk  
100% Polyester (Lining)

**DESCRIPTION**  
Balloon sleeves and a fitted waist panel, followed by a skirt that flares slightly with lace details.  
Exclusive print

**COLOR**  
187/190

**SIZES**  
34, 36, 38, 40, 42, 44

**WSP**  
162,96

**RRP**  
440,00



**REF**  
VST2301B23B

**NAME**  
Ruffled dress

**COMPOSITION**  
100% Silk  
100% Polyester (Lining)

**DESCRIPTION**  
Ruffled front and back open-neck dress  
Balloon sleeve and fitted waist panel that then flares slightly in a skirt

**COLOR**  
117/197/172/Black

**SIZES**  
34, 36, 38, 40, 42, 44

**WSP**  
144,44

**RRP**  
390,00



**REF**  
VST2307B23B

**NAME**  
Lace details silk midi dress

**COMPOSITION**  
100% Silk  
100% Polyester (Lining)

**DESCRIPTION**  
Balloon sleeves and a fitted waist panel, followed by a skirt that flares slightly with lace details.

**COLOR**  
197/172/117/Black

**SIZES**  
34, 36, 38, 40, 42, 44

**WSP**  
144,44

**RRP**  
390,00

## THE MIDI DRESSES



**REF**  
VST2306B23B

**NAME**  
Ruffled round neckline silk midi dress

**COMPOSITION**  
100% Silk  
100% Polyester (Lining)

**DESCRIPTION**  
Dress with a round neckline, front ruffles, and wide sleeves. Fitted waist panel, followed by a skirt that flares slightly

**COLOR**  
172/198/117/197/Black

**SIZES**  
34, 36, 38, 40, 42, 44, 46

**WSP**  
144,44

**RRP**  
390,00



**REF**  
VST2306B23B190

**NAME**  
Ruffled round neckline silk midi dress

**COMPOSITION**  
100% Silk  
100% Polyester (Lining)

**DESCRIPTION**  
Dress with a round neckline, front ruffles, and wide sleeves. Fitted waist panel, followed by a skirt that flares slightly  
Exclusive print

**COLOR**  
190/187

**SIZES**  
34, 36, 38, 40, 42, 44, 46

**WSP**  
162,96

**RRP**  
440,00



**REF**  
VST2306B23B

**NAME**  
Ruffled round neckline silk midi dress

**COMPOSITION**  
100% Silk  
100% Polyester (Lining)

**DESCRIPTION**  
Dress with a round neckline, front ruffles, and wide sleeves. Fitted waist panel, followed by a skirt that flares slightly

**COLOR**  
198/172/117/197/Black

**SIZES**  
34, 36, 38, 40, 42, 44, 46

**WSP**  
144,44

**RRP**  
390,00



**REF**  
VST2302B23B

**NAME**  
Silk Print Kaftan

**COMPOSITION**  
100% Silk  
100% Polyester (Lining)

**DESCRIPTION**  
Front ruffles Kaftan, and wide sleeves with embellished embroidery

**COLOR**  
172/198/117/197/Black

**SIZES**  
34, 36, 38, 40, 42, 44

**WSP**  
125,93

**RRP**  
340,00



**REF**  
VST2302B23B190

**NAME**  
Silk Print Kaftan

**COMPOSITION**  
100% Silk  
100% Polyester (Lining)

**DESCRIPTION**  
Front ruffles Kaftan, and wide sleeves with embellished embroidery  
Exclusive

**COLOR**  
190/187

**SIZES**  
34, 36, 38, 40, 42, 44

**WSP**  
144,44

**RRP**  
390,00

## THE MINI DRESSES



**REF**  
VST2303B

**NAME**  
One Shoulder Dress

**COMPOSITION**  
100% Silk

**DESCRIPTION**  
One-Shoulder crepe de chine silk dress Ballon sleeves with elasticated cuff

**COLOR**  
197/198/172/117/Black

**SIZES**  
S,M,L,XL

**WSP**  
118,52

**RRP**  
320,00



**REF**  
VST2303B23B187

**NAME**  
One Shoulder Dress

**COMPOSITION**  
100% Silk

**DESCRIPTION**  
One-Shoulder crepe de chine silk dress Ballon sleeves with elasticated cuff Exclusive Print

**COLOR**  
187/190

**SIZES**  
S,M,L,XL

**WSP**  
140,74

**RRP**  
380,00



**REF**  
VST2303B

**NAME**  
One Shoulder Dress

**COMPOSITION**  
100% Silk

**DESCRIPTION**  
One-Shoulder crepe de chine silk dress Ballon sleeves with elasticated cuff

**COLOR**  
198/197/172/117/Black

**SIZES**  
S,M,L,XL

**WSP**  
118,52

**RRP**  
320,00



**REF**  
VST19007B23B

**NAME**  
Ruffled Silk Mini Dress

**COMPOSITION**  
1100% Silk  
100% Polyester (Lining)

**DESCRIPTION**  
Flutter sleeves and ruffle details on a V-neckline

**COLOR**  
197/198/172/117/Black

**SIZES**  
34, 36, 38, 40, 42, 44

**WSP**  
81,48

**RRP**  
220,00



**REF**  
VST19007B23B

**NAME**  
Ruffled Silk Mini Dress

**COMPOSITION**  
100% Silk  
100% Polyester (Lining)

**DESCRIPTION**  
Flutter sleeves and ruffle details on a V-neckline

**COLOR**  
Black/197/198/172/117

**SIZES**  
34, 36, 38, 40, 42, 44

**WSP**  
81,48

**RRP**  
220,00

ant

## THE SEQUINS DRESSES



**REF**  
VST2304B23B199

**NAME**  
Open back sequin mini dress

**COMPOSITION**  
100% Pes  
100% Silk (lining and strap)

**DESCRIPTION**  
Balloon mini dress  
Open-back and silk strap

**COLOR**  
199

**SIZES**  
34, 36, 38, 40, 42, 44,46

**WSP**  
129,63

**RRP**  
350,00



**REF**  
VST2304B23B240

**NAME**  
Open back sequin mini dress

**COMPOSITION**  
82% CV + 18% Silk  
100%Pes (lining)  
92% PA + 8% EA (strap)

**DESCRIPTION**  
Balloon mini dress  
Open-back and velvet strap

**COLOR**  
240

**SIZES**  
34, 36, 38, 40, 42, 44

**WSP**  
122,22

**RRP**  
330,00



**REF**  
VST19007B23B241

**NAME**  
Ruffled sequin mini dress

**COMPOSITION**  
92% PA + 8% EA  
100% Polyester (Lining)

**DESCRIPTION**  
Flutter sleeves and ruffle details on a V-neckline

**COLOR**  
241

**SIZES**  
34, 36, 38, 40, 42, 44

**WSP**  
89,89

**RRP**  
240,00

## TOP AND SHIRTS



**REF**  
BLS2302B23B

**NAME**  
Tie-detailed silk crepe de chine blouse

**COMPOSITION**  
100% Silk

**DESCRIPTION**  
Balloon Sleeves  
Bow details

**COLOR**  
117/197/172/Black

**SIZES**  
34, 36, 38, 40, 42, 44, 46

**WSP**  
73,70

**RRP**  
199,00



**REF**  
BLS18006A

**NAME**  
Ruffled Chiffon Blouse

**COMPOSITION**  
100% Silk  
100% Polyester (Lining)

**DESCRIPTION**  
Non-stretchy fabric.  
Pussy-bow neck tie.  
Cut for a slightly loose fit.  
With lining top

**COLOR**  
158/056

**SIZES**  
34, 36, 38, 40, 42, 44

**WSP**  
73,70

**RRP**  
199,00



**REF**  
BLS2301B23B190

**NAME**  
One-Shoulder Blouse

**COMPOSITION**  
100% Silk

**DESCRIPTION**  
One-Shoulder crepe de chine silk blouse  
Balloon sleeves with elasticated cuff  
Exclusive Print

**COLOR**  
190/187

**SIZES**  
34, 36, 38, 40, 42, 44

**WSP**  
88,52

**RRP**  
239,00



**REF**  
BLS19004

**NAME**  
Ruffled Silk Blouse

**COMPOSITION**  
100% Silk

**DESCRIPTION**  
Flutter sleeves and ruffle details on a V-neckline

**COLOR**  
117/197/172/Black

**SIZES**  
34, 36, 38, 40, 42, 44

**WSP**  
70,37

**RRP**  
190,00



**REF**  
BLS18006A

**NAME**  
Ruffled Chiffon Blouse

**COMPOSITION**  
100% Silk  
100% Polyester (Lining)

**DESCRIPTION**  
Non-stretchy fabric.  
Pussy-bow neck tie.  
Cut for a slightly loose fit.  
With lining top

**COLOR**  
056/158

**SIZES**  
34, 36, 38, 40, 42, 44

**WSP**  
73,70

**RRP**  
199,00



**REF**  
BLS2301B23B187

**NAME**  
One-Shoulder Blouse

**COMPOSITION**  
100% Silk

**DESCRIPTION**  
One-Shoulder crepe de chine silk blouse  
Balloon sleeves with elasticated cuff  
Exclusive Print

**COLOR**  
187/190

**SIZES**  
34, 36, 38, 40, 42, 44

**WSP**  
88,52

**RRP**  
239,00

## TOP AND SHIRTS



**REF**  
BLS2102B23B191

**NAME**  
Halterneck feather-trimmed organza top

**COMPOSITION**  
100% Silk  
100%Silk (Lining)

**DESCRIPTION**  
Organza silk top with bow feather-trimmed details.  
Silk lining

**COLOR**  
191

**SIZES**  
34, 36, 38, 40, 42, 44

**WSP**  
114,81

**RRP**  
310,00



**REF**  
BLS2303B23B

**NAME**  
Voluminous Ruffled Blouse

**COMPOSITION**  
100%Silk

**DESCRIPTION**  
Exaggerated ruffled organza silk fabric blouse  
Asymetric ruffles

**COLOR**  
191

**SIZES**  
34, 36, 38, 40, 42, 44

**WSP**  
201,85

**RRP**  
545,00



**REF**  
BLS2305B23B

**NAME**  
Batwing sleeves silk blouse

**COMPOSITION**  
100% Silk

**DESCRIPTION**  
Silk crepe de chine halterneck top  
Batwing sleeves with openings at the shoulders

**COLOR**  
Black/197/198/172/117

**SIZES**  
34, 36, 38, 40, 42, 44

**WSP**  
53,70

**RRP**  
145,00



**REF**  
BLS2102B23B

**NAME**  
Halterneck feather-trimmed organza top

**COMPOSITION**  
100% Silk  
100%Silk (Lining)

**DESCRIPTION**  
Organza silk top with bow feather-trimmed details.  
Silk lining

**COLOR**  
245

**SIZES**  
34, 36, 38, 40, 42, 44

**WSP**  
96,30

**RRP**  
260,00



**REF**  
BLS2403A24A

**NAME**  
Silk-Satin Shirt

**COMPOSITION**  
100% Polyester

**DESCRIPTION**  
Button-down shirt with a soft fluidity  
Classic collar

**COLOR**  
180

**SIZES**  
34, 36, 38, 40, 42, 44

**WSP**  
73,70

**RRP**  
199,00

ant

## THE SKIRTS



**REF**  
SAIA2302B23B193

**NAME**  
Baloon Skirt

**COMPOSITION**  
85% Pes/15% Silk  
100%Polyester (Lining)

**DESCRIPTION**  
Gathered midi skirt  
High-rise waist and voluminous hem

**COLOR**  
193

**SIZES**  
34, 36, 38, 40, 42, 44

**WSP**  
110,74

**RRP**  
299,00



**REF**  
SAI2305B23B

**NAME**  
Ruffled lace details skirt

**COMPOSITION**  
100%Polyester  
100%Polyester (Lining)

**DESCRIPTION**  
Ruffled georgette midi skirt  
Lace and velvet details  
High waist

**COLOR**  
Black

**SIZES**  
34, 36, 38, 40, 42, 44

**WSP**  
107,41

**RRP**  
290,00



**REF**  
SAIA2304B23B

**NAME**  
Asymmetric skirt

**COMPOSITION**  
100%Silk

**DESCRIPTION**  
High waist silk satin skirt Asymmetric hem

**COLOR**  
117/197/172/Black

**SIZES**  
34, 36, 38, 40, 42, 44

**WSP**  
92,59

**RRP**  
250,00



**REF**  
SAI2303B23B

**NAME**  
Ruffled tulle skirt

**COMPOSITION**  
100% Polyester  
100% Polyester (Lining)

**DESCRIPTION**  
Ruffled gradient colors tulle midi skirt High waist Elasticated waistband

**COLOR**  
196

**SIZES**  
34, 36, 38, 40, 42, 44, 46

**WSP**  
118,52

**RRP**  
320,00



**REF**  
SAI2305B23187

**NAME**  
Ruffled silk skirt

**COMPOSITION**  
100% Silk  
100% Polyester (Lining)

**DESCRIPTION**  
Ruffled crepe de chine midi skirt  
Lace and velvet details  
Exclusive print

**COLOR**  
187

**SIZES**  
34, 36, 38, 40, 42, 44

**WSP**  
132,96

**RRP**  
359,00

## THE PANTS AND JUMPSUITS



**REF**  
CLC002A22B

**NAME**  
Crepe de Chine Silk Pants

**COMPOSITION**  
100% Silk  
100%Polyester (Lining)

**DESCRIPTION**  
Fluid leg with wider hem.  
With lining.  
Invisible zip closure

**COLOR**  
148/117

**SIZES**  
34, 36, 38, 40, 42, 44

**WSP**  
107,41

**RRP**  
290,00



**REF**  
FTM2301B23B039

**NAME**  
Lace Jumpsuit

**COMPOSITION**  
55% PA 45%Cotton

**DESCRIPTION**  
Lace jumpsuit with a shirt collar.  
Elastic waist and cuffs with a bow.  
Delicate interior lining.

**COLOR**  
039

**SIZES**  
34, 36, 38, 40, 42, 44

**WSP**  
125,93

**RRP**  
340,00



**REF**  
CLC002A22B

**NAME**  
Crepe de Chine Silk Pants

**COMPOSITION**  
100% Silk  
100%Polyester (Lining)

**DESCRIPTION**  
Fluid leg with wider hem.  
With lining.  
Invisible zip closure

**COLOR**  
117/148

**SIZES**  
34, 36, 38, 40, 42, 44

**WSP**  
107,41

**RRP**  
290,00



**REF**  
CLC2401A24A

**NAME**  
Metallic knit pants

**COMPOSITION**  
97% CV/ 3% FM  
97% CV/ 3% FM (Lining)

**DESCRIPTION**  
Knit pants with elastic waist.  
Hem cuffs with a bow.

**COLOR**  
246

**SIZES**  
XS,S,M,L

**WSP**  
46,30

**RRP**  
125,00

## THE CARDIGANS



**REF**  
CSC2301B23B

**NAME**  
Oversized mohair-blend cardigan

**COMPOSITION**  
50% Mohair/ 32% PA/ 18% Wool

**DESCRIPTION**  
Ruffled front and back open-neck jumpsuit  
Flutter sleeve  
Removable Belt  
Fluid leg with wider hem  
Exclusive print

**COLOR**  
192/244

**SIZES**  
S,M,L

**WSP**  
88,89

**RRP**  
240,00



**REF**  
CSC2301B23B

**NAME**  
Oversized mohair-blend cardigan

**COMPOSITION**  
50% Mohair/ 32% PA/ 18% Wool

**DESCRIPTION**  
Ruffled front and back open-neck jumpsuit  
Flutter sleeve  
Removable Belt  
Fluid leg with wider hem  
Exclusive print

**COLOR**  
244/192

**SIZES**  
S,M,L

**WSP**  
88,89

**RRP**  
240,00

# FABRICS - COLOURS



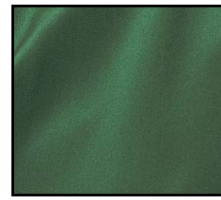
100% Silk  
Crepe de Chine 117



100% Silk  
Crepe de Chine 197



100% Silk  
Crepe de Chine 148



100% Silk  
Crepe de Chine 172



100% Silk  
Crepe de Chine 198



100% Silk  
Crepe de Chine 245



100% Silk  
Crepe de Chine 052  
Black



100% Silk  
Crepe de Chine 190



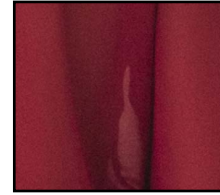
100% Silk  
Crepe de Chine 187



100% Silk  
Organza 191



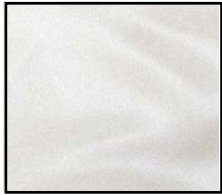
100% Silk  
Georgette 056



100% Silk  
Georgette 158



100% Polyester  
Georgette Black



100% Polyester  
Satin 180



85% Pes/15% Silk  
Mikado 193



100% Polyester  
Tulle 196



155% PA 45% Cotton  
Lace 039



100% Pes  
Sequin 199



82% CV + 18% Silk  
Sequin 240



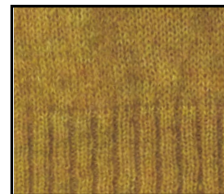
92% PA + 8% EA  
Sequin 241



97% CV/ 3% FM  
Knit 246



50% Mohair/  
32% PA/ 18% Wool  
Knit 244



50% Mohair/  
32% PA/ 18% Wool  
Knit 192

brandin

Sales Agency and  
Digital Showroom

sales Carla Reis  
carla@brandin.pt · +351 919 775 131

[showroom.brandin.pt](http://showroom.brandin.pt)